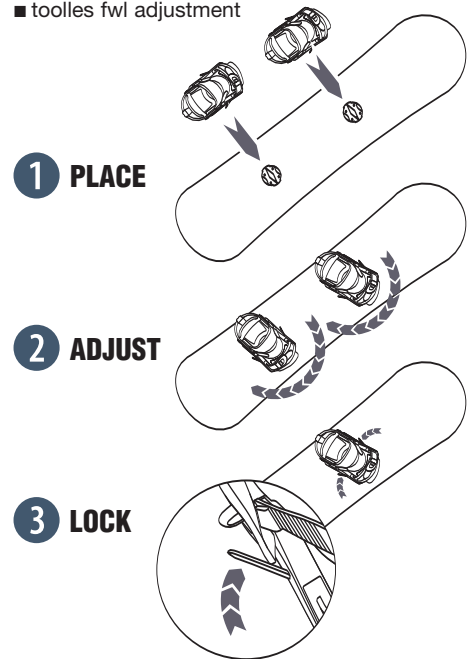
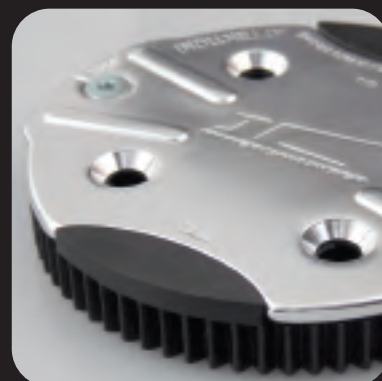
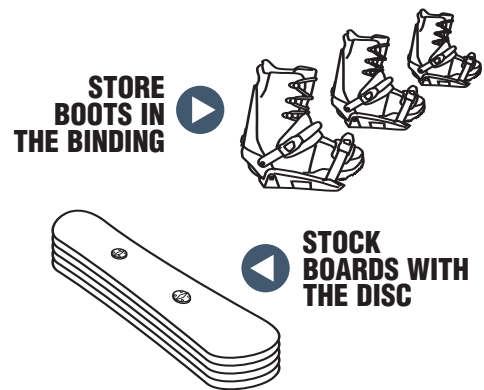


TIME SAVINGS

- toolless mounting
- toolless angle adjustment
- toolless size adjustment
- toolless strap adjustment
- toolless fwd adjustment



SPACE SAVINGS



PRE-MOUNTED DISC

■ heart of the interchanger system is the 2-component disc, permanently mounted on your rental board. The binding itself is placed within seconds.



SERVICE RAMP

■ for your board service you do not have to dismount the interchanger disc. just use our service ramp - done!

#75800



SPARE PARTS

■ interchanger offers a wide range of high quality spareparts - basic mountings - crews - special boltguards - fixing screws - buckels in several sizes - rental toe and anklestraps - toothstraps - universal discs ...

IC INTERCHANGER

SNOWBOARD RENTAL SYSTEM

austria 1230 vienna, eitnergasse 7
 phone: +431 6174282 20, fax: +431 6174282 50
 info@sp-united.com, www.sp-united.com/ic



QUICK AND EASY!

Speed and durability are the keys for a successful rental business. This is why Interchanger bindings feature toolless adjustments or allow basic usage of power tools, supporting your personal inhouse system. No other rental product offers the same performance to SAVE TIME AND SPACE. The careful selection of the best materials, the special design, the finish and numerous inhouse and on-snow tests assure that only the best of each item is selected for the Interchanger brand.



TOOLLESS MOUNTING AND ANGLE ADJUSTMENT



TOOLLESS SIZE ADJUSTMENT



TOOLLESS ANKLE STRAP CENTERING + STOPPER



HYDE™ 3D ANKLE STRAP



TCS TOE STRAP



DURABLE PROFILE RAMPS



BARCODE POCKET



STRESS-POINT STITCHING



SIZE PRINT ON SHAFT

IC PRO

- covered 3D HYDE strap
- TCS toe strap
- toolless heelcup adjustment
- aluminium buckles
- multi adjustable highback
- full highback pad - molded EVA
- toolless fwd.lean adjuster

#180602ic



IC ADVANCED

- toolless heelcup adjustment
- fibre buckles
- multi adjustable highback
- toolless fwd.lean adjuster
- molded EVA highback pad
- covered 3D ankle strap

#180512ic



IC BASIC

- fibre buckles
- multi adjustable highback
- fwd.lean adjuster
- EVA highback pad
- molded EVA ankle strap

#180502ic



IC JUNIOR

- ADVANCED features

#180510ic



RECON

- ergo-fit liner
- durable stitched outsole
- quick-lock liner lacing
- 3D molded tongue
- covered forefoot laces
- HF heelprotection
- US 5-14
- SPL system (optional)

#88402ic / SPL: #88412ic



normal lacing system

with SPL

PRIOR

- all RECON features but linerless construction
- SPL system (optional)

#88400ic / SPL: #88411ic

