



TOOLLESS MOUNTING AND ANGLE ADJUSTMENT

TOOLLESS SIZE ADJUSTMENT

TOOLLESS ANKLE STRAP CENTERING + STOPPER

DURABLE PROFILE RAMPS



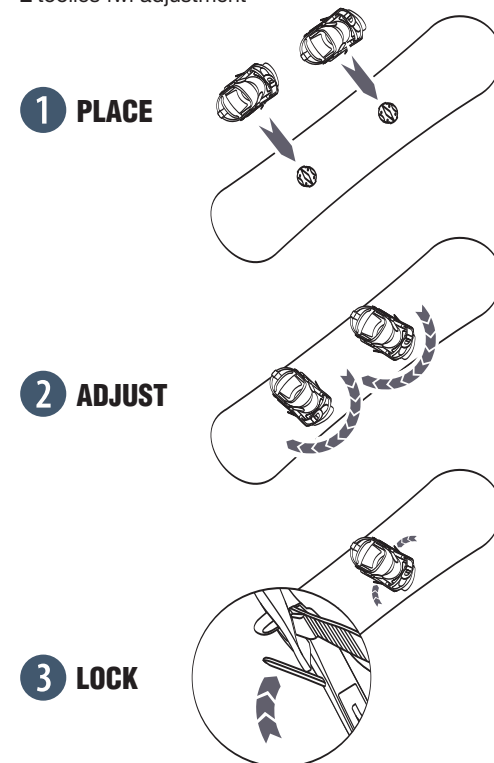
Speed and durability are the keys for a successful rental business. This is why interchanger bindings feature toolless adjustments or allow basic usage of power tools, supporting your personal inhouse system. No other rental product offers the same performance to **SAVE TIME AND SPACE**.

The careful selection of the best materials, the special design, the finish and numerous inhouse and on snow tests, assure that only the best of each item is selected for the interchanger brand.

- | | |
|-----------------------------|---------------------------------|
| 1 fwd.lean quick adjuster | 8 big size print |
| 2 aluminium heelcup | 9 3D molded tongue |
| 3 durable EVA pads | 10 barcode/size label pocket |
| 4 aluminium buckles | 11 extra strong laces and hooks |
| 5 durable profile ramps | 12 protected toe area |
| 6 toolless angle adjustment | 13 stress-point stitching |
| 7 toolless size adjustment | 14 extreme outsole grip |

TIME SAVINGS

- toolless mounting
- toolless angle adjustment
- toolless size adjustment
- toolless strap adjustment
- toolless fwd adjustment



SPACE SAVINGS

- store boards
- store bindings
- store boots
- store boots in the binding



LEAVE BOOTS IN THE BINDING



STOCK BOARDS WITH THE DISC

EXTREME OUTSOLE GRIP

STRESS-POINT STITCHING

BARCODE POCKET

SIZE PRINT ON SHAFT





INTERCHANGER

IC PRO

- 3 alu heelcup size positions
- aluminium buckles
- multi adjustable highback
- toolless fwd.lean adjuster
- overall EVA highback pad
- covered 3D ankle strap
- covered toe strap



IC ADVANCED

- 3 fibre heelcup size positions
- fibre buckles
- multi adjustable highback
- toolless fwd.lean adjuster
- molded EVA highback pad
- covered 3D ankle strap



IC BASIC

- 3 fibre heelcup size positions
- fibre buckles
- multi adjustable highback
- fwd.lean adjuster
- EVA highback pad
- molded EVA ankle strap



IC JUNIOR

- IC ADVANCED features



PRIOR JUNIOR

RECON

- california construction
- ergo-fit liner
- EVA linersole
- quick lock liner lacing
- latex cushioned heel support
- 3D molded tongue
- covered forefoot laces
- self locking lace hooks
- HF heelprotection



PRIOR

- california construction
- EVA linersole
- quick lock liner lacing
- latex cushioned heel support
- 3D molded tongue
- covered forefoot laces
- self locking lace hooks



Analyzing, testing and listening to our customers, knowing exactly the rental boots' requirements from the day to day business. after a year we ended up with a long list of attributes and demands. We started working and improving the new line. Experience the all new IC boots – from the new outsole to the new materials – from the specific reinforced design to each single heavyweight stitching. Following your demands. this combination of fit, durability and design is unique.



PRE-MOUNTED DISC

- heart of the interchanger system is the 2-component disc, permanently mounted on your rental board. The binding itself is placed within seconds.



SERVICE RAMP

- for your board service you do not have to dismount the interchanger disc. just use our service ramp - done!



SPARE PARTS

- interchanger offers a wide range of high quality spareparts - basic mountingscrews - special boltguards - fixing screws - buckels in several sizes - rental toe and anklestraps - toothstraps - universal discs ...

